
ARTBREAK CONTACTS

✉ Lisa Leach – ArtBreak Director, 400 Clyde Fant Parkway, Shreveport, LA 71101

☎ Phone: 673-6500 / Fax 673-6515

✉ E-mail: artbreak@shrevearts.org; lisa@shrevearts.org Facebook: ArtBreak

✉ CPSB Gray Box: ArtBreak @ Central Office

✉ BPSB Green Box: Mary Glass @ BIC

TABLE OF CONTENTS

GENERAL INFORMATION

About this Participation Guide	2
Overview	3
Calendar of Events & Deadlines	4 - 6
Major and Corporate Sponsors	7 - 8
I Love ArtBreak Sponsors 2011	9
Map & Directions to SRAC	10

SCHOOL PARTICIPATION and FORMS

2 nd Grade Summer Reading Festival	11 - 13
AIE Third Grade Days	14 - 15
School Volunteers	16
Teacher Volunteers	17
Advanced T-Shirt Sales	18 - 20
School Exhibit Booths	21 - 23
School Performances	24 - 25

JURIED EXHIBITION

Music Composition Awards	26
Music Composition Overview	27
Music Composition Entries and Form	28
Visual Exhibition Overview	29
Visual Awards	30
Visual Exhibition Eligible Entries	31
Very Special Arts Festival Visual Competition	32
Visual Entry Guidelines and Quick Check	33 - 34
Visual Entry Sample and Forms	35 - 37
Visual Portfolio Entries and Forms	38 - 40
Literary Exhibition Overview	41
Literary Awards	42
Literary Exhibition Guidelines and Very Special Arts Festival Literary Competition	43 - 44
Literary Entry Form Samples and Forms	45 - 47
Literary Portfolio Entries and Forms	48 - 50

WORKSHOPS

51 - 54

INDIVIDUAL COMPETITIONS

ArtBreak Talent Show	56 - 57
ArtBreak Idol	58 - 60

Welcome to



About This Participation Guide

Join us April 23 – April 29, 2012 at the Shreveport Convention Center for ArtBreak 2012 as we celebrate Caddo and Bossier Parish Students' Artistic Success! ArtBreak is a free, hands-on family event produced by the Shreveport Regional Arts Council, Caddo Parish Schools and Bossier Parish Schools. The ArtBreak Festival provides the entire region the opportunity to witness first-hand the results of quality Fine Arts and Arts in Education programming. It is only through the combined efforts of school administrators, teachers, artists, our generous sponsors, and hundreds of community volunteers that we are able to continue to provide this educational and creative vehicle for our students free of charge.

Choose the festival activities your school would like to participate in, complete the appropriate forms, copy or tear the forms out of the booklet, and return to ArtBreak. Be sure to keep a copy of the completed forms and track your school's participation.

ARTBREAK GOALS & OBJECTIVES

- ★ Showcase each school's visual, literary, cultural, and performing arts programs.
 - ★ Reward individual student excellence as fostered in the classroom in the areas of performing, visual and literary arts through a professional jury process.
 - ★ Heighten community awareness of the positive impact of Arts in Education through promotion of the Arts Curriculum through programs and professional artist demonstrations. Showcase each school's visual, literary, cultural, and performing arts programs.
 - ★ Demonstrate the inter-disciplinary nature of Arts in Education programming that correlates the basic skill areas of Math, Science, Language Arts, and History with Art Disciplines of Visual, Literary, and Performing Arts.
 - ★ Teach students to make informed artistic choices through Student Choice Awards Workshops and Hands-on Arts Activities.
-

Overview

ARTBREAK, the largest student arts festival in the South, is a celebration of the creativity that flourishes in our children. Each student is a celebrity in this seven-day festival showcasing the artists and art programs in the visual, literary, cultural, and performing arts in Caddo Parish Public Schools, Bossier Parish Public Schools and participating private schools in Caddo and Bossier parishes. ArtBreak is a family festival with an emphasis on **students** entertaining, enlightening and enriching adults!

Twenty-eight years ago, a group of parents, teachers, students, artists, administrators, and school board members met to talk about the arts in education needs and strengths in Caddo Parish Schools. This ongoing dialogue, which took place over a six week period, culminated in the idea of a festival of, by and for students. Twenty-three years later, the Bossier Parish School System joined Caddo Parish Schools in celebrating student achievements in the Arts.

The **VERY SPECIAL ARTS FESTIVAL (VSAF)**, an international organization dedicated to enriching the lives of children and adults with disabilities, joined **ArtBreak** in 1990. Founded in 1974 as an educational affiliate of the John F. Kennedy Center for the Performing Arts, the Very Special Arts Festival presents five days of art activities and performances for Caddo and Bossier third grade – fifth grade students receiving special education services, as well as, participation in Juried Visual and Literary Competitions.

BACKGROUND: ArtBreak began in 1984 as a showcase of the successful curriculum-based arts education program and community based arts in education programs in Caddo Parish Public Schools. School Board leadership believes that the arts are critical to the education and development of the total child. More than 250 certified arts instructors teach students, at all grade levels (K-12), music, visual art, and creative writing. This program is supplemented by a comprehensive Arts in Education (AIE) program administered by the Shreveport Regional Arts Council and featuring seminars and hands-on art projects taught by professional artists, performances and community outreach. Program activities are designed by teachers and artists to correlate various art forms with the basic skills taught in the classroom.

ArtBreak 2012 Events & Deadlines



JANUARY

<u>Sun</u>	<u>Mon</u>	<u>Tue</u>	<u>Wed</u>	<u>Thu</u>	<u>Fri</u>	<u>Sat</u>
1	2	3	4	5	6	7
8	9	10	11	12	13	14
15	16 Martin Luther King Jr. Day	17	18	19	20	21
22	23	24	25	26 ArtBreak Teacher Orientation 3:30 @ artspace	27	28
29	30	31	Notes:			

FEBRUARY

<u>Sun</u>	<u>Mon</u>	<u>Tue</u>	<u>Wed</u>	<u>Thu</u>	<u>Fri</u>	<u>Sat</u>
			1	2	3	4
5	6	7	8	9	10	11
12	13	14 Valentines Day	15	16	17	18
19	20 Presidents Day	21	22 Washington's Birthday	23	24 ALL FORMS DUE: unless otherwise noted	25
26	27	28	29	Notes:		

ArtBreak 2012 Events & Deadlines



MARCH

<u>Sun</u>	<u>Mon</u>	<u>Tue</u>	<u>Wed</u>	<u>Thu</u>	<u>Fri</u>	<u>Sat</u>
				1 ArtBreak Teacher Confirmation Packets to go out	2	3
4	5	6	7	8	9	10
11	12	13	14	15	16 T-Shirt Sales Form Due	17 St. Patrick's Day
18	19	20 ArtBreak Talent Show Auditions held at artspace – 710 Texas St., Downtown Shreveport, 4:00 – 8:00	21	22	23	24
25	26	27	28	29	30	31



ArtBreak 2012 Events & Deadlines

APRIL

<u>Sun</u>	<u>Mon</u>	<u>Tue</u>	<u>Wed</u>	<u>Thu</u>	<u>Fri</u>	<u>Sat</u>
1	2	3 Juried Portfolio Turn-In, <small>artspace</small> 710 Texas St., 3:30 – 5:30	4 Literary Portfolio Video Interview by appointment, <small>artspace</small> - 710 Texas St.	5 Visual Portfolio Video Interview by appointment <small>artspace</small> - 710 Texas St.	6 Good Friday	7
8 EASTER	9	10 Juried Literary, Visual & Music Turn-In, 3:30 – 5:30, Location TBD	11 Juried Literary, Visual & Music Turn-In, 3:30 – 5:30, Location TBD	12 Jurying (Closed to public)	13 Jurying (Closed to Public)	14 Jurying (Closed to Public)
15	16 ArtBreak Idol Auditions, Shreveport Convention Center (Caddo St. & Market St.) 4:00 – 8:00	17	18 Juried Winners to be Announced	19 ArtBreak Idol Eliminations, Shreveport Convention Center 4:30 – 6:30	20 School Booth Set-Up Noon – 8:00	21
22	23 ArtBreak 2 nd & 3 rd Graders ArtBreak Idol Eliminations, Shreveport Convention Center 4:30 – 6:30	24 ArtBreak 2 nd & 3 rd Graders	25 ArtBreak 2 nd & 3 rd Graders VIP Tours, 9:00 – 11:00 STUDENT Workshops, 8:00 – 2:00 ArtBreak Idol Eliminations, 4:30 – 9:00	26 ArtBreak 2 nd & 3 rd Graders Talent Show Rehearsal, Shreveport Convention Center 5:00 – 7:00	27 ArtBreak 2 nd & 3 rd Graders Festival Opens 5:00 pm ArtBreak Talent Show 7:00	28 Festival Opens 10:00 ArtBreak Idol Semi-Finals 7:00
29 Noon Opening 3:00 pm Idol Finals & Awards Ceremony	30					

THANKS to the ArtBreak MAJOR Sponsors:



**Community
Network, Inc.**



**THE LEONARD W. AND
BETTY PHILLIPS
FOUNDATION**



ArtBreak is a proud participant in CELEBRATE EDUCATION.

CADDO PARISH • BOSSIER PARISH



ARTBREAK 2011

2011 CORPORATE & FOUNDATION

2011 MAJOR CORPORATE & FOUNDATION SPONSORS

- ★ **JP Morgan Chase Bank**

- ★ **Griggs Enterprise/McDonalds**

- ★ **Community Network, Inc.**

- ★ **AT&T Real Yellow Pages**

- ★ **The Leonard W. and Betty Phillips
Foundation**

- ★ **Capital One**

- ★ **Caddo Parish Special Education
Department**

- ★ **Union Pacific Foundation**

- ★ **Citizens National Bank**



SPONSORS

Blue Cross and Blue Shield of Louisiana ★ The Community Foundation
 Airline Plaza, LLC ★ AEP Swepco ★ William C. Woolf Foundation
 The Wheless Foundation ★ The Community Foundation - Kinsey Family Fund
 The Powers Foundation ★ Chesapeake Energy ★ Mr. and Mrs. David Benscoter
 Sheriff Steve Prator ★ Caddo Management, Inc. ★ Peter and Linda Moncrief
 Phillips Energy Partners, LLC ★ Phillip & Alma Rozeman ★ Jeffrey & Sandi Kallenberg

2011 IN-KIND SUPPORT

City of Shreveport ★ KTBS ★ Coca-Cola Bottling Co. ★ Brookshire Grocery Co.
 Diesel Driving Academy ★ Farmer's Seafood ★ Ridgway's, Ltd. ★ SPAR
 Boyett Printing ★ Lamar Outdoor Advertising ★ Caddo Parish School Board
 Bossier Parish School Board ★ Bossier Arts Council ★ Hilton Shreveport
 Boyett Printing ★ Cumulus Broadcast Center ★ H&E Equipment Services
 Republic Allied Waste Services, Inc ★ SignIt, Inc. ★ Dr. and Mrs. Green

ArtBreak is made possible in part by grants from the National Endowment for the Arts, the Louisiana State Arts Council, and the Louisiana Division of the Arts, Office of Cultural Development, Department of Culture, Recreation and Tourism.

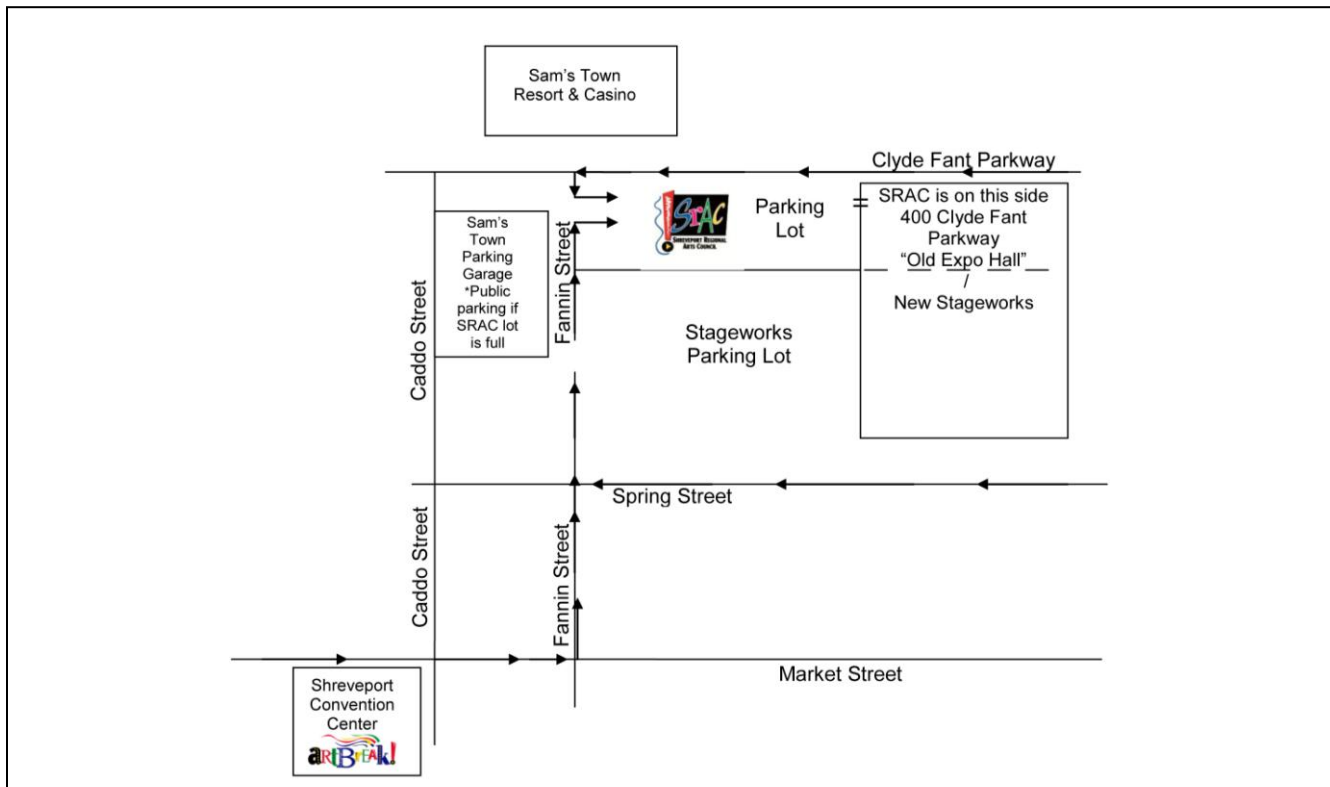
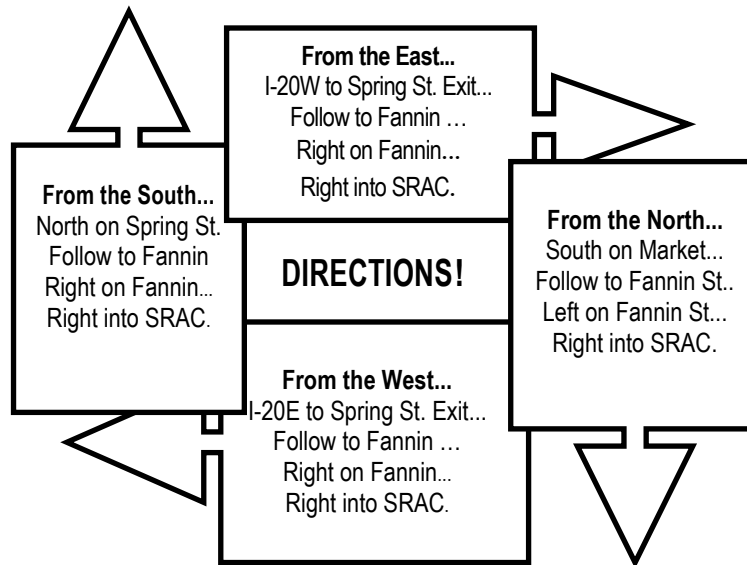
OUR HEART FELT THANKS TO THESE

I LOVE ARTBREAK DONORS!

Teresa & David Allen ★ Rachel and Don Brian
Emily Biernacki ★ Art is Better Than Recess ★ Anonymous
Lane & Cathy Callaway ★ Jacquelyn L. Caskey
Cox Grandchildren ★ Dandy Products Inc.
Patsy and Delton ★ Fire Tech Systems ★ Glenn Flournoy
Dr. Ben Foster – Orthodontist ★ Knox Goodman
Jack W. Grigsby ★ Austin, Ella & Emerson Horne
Gene & Ellen Huggs ★ Anne & Oliver Jenkins
Neil Johnson Photography ★ Bill & Marie Kalmbach ★ Louisiana Artists, Inc.
Mary & Denny Long ★ Gene & Jan Mack
Sophia Maneschi ★ LaVerne McWherter Memorial
Dr. and Mrs. Daryl W. Mitchell ★ OB/GYN Associates of Shreveport
Gerald & Cynthia Ortego ★ Dr. and Mrs. David Pou ★ Red River Trailways
The American Rose Society & Gardens of the American Rose Center
Ms. Pearline Sloan ★ Melissa & Bruce Simon
Adelaide & Shelby Smith ★ Dixey Thornton
Tate & Barnes Walk In Clinic ★ Susonne A. Ursin
Shirley Wilhite ★ Mr. & Mrs. Willis
The Wise Family ★ In Memory of George Wray
Voncellie Wyatt ★ Dorris Simmons & Tammy Mazzone

Map & Directions to the Shreveport Regional Arts Council (SRAC) office and Shreveport Convention Center!

SRAC is easy to work with – but hard to find!



PLEASE NOTE: SRAC is housed in Stageworks (the old Expo Hall building). When visiting SRAC, please park in the parking lot closest to Fannin and Clyde Fant Parkway or the Sam's Town parking garage.

Summer Reading Festival For Second Graders

In collaboration with the (SRAC) Shreveport Regional Arts Council, Caddo & Bossier Parish Public Schools, Shreve Memorial Library, Bossier Parish Public Library, and KTBS-TV join to present the Summer Reading Festival. This is time for all second graders in the region to spend a portion of a fun filled day exploring the importance of reading, particularly during the upcoming summer vacation. Students who receive Special Education services in grades 3-5 are also included in the Summer Reading Festival.

The purpose of the Summer Reading Festival is to encourage students to make reading a lifelong activity and to obtain a public library card. They will hear stories, songs, and drama that all emphasize that reading is more than just a subject prescribed in the curriculum. Each of the areas visited will make them want to read just for the fun of it! Stimulating decorations and larger than life sized depictions of favorite book characters add to the excitement of the day.

Held at the Shreveport Convention Center in conjunction with ARTBREAK serves to remind students that art is an important element in children's literature. While there, second grade students will participate in three activities including a professional storyteller, a play written by the Shreve Memorial Players, and an interactive professional performance.

Students will also be encouraged to return to the Summer Reading Festival over the weekend for ArtBreak activities and to hear author/illustrator David Catrow. They can visit the Caddo Association of School Librarians' Book Fair to purchase his books for autographing.

SUMMER READING FESTIVAL QUICK CHECK

- Send in an **UPDATED** form only if your student count increases or decreases by more than five students.

- Students should eat lunch either **BEFORE** or **AFTER** their trip to the Summer Reading Festival. A complimentary beverage will be provided to students by the Convention Center. There is no room on site to eat lunch; however, if you want to incorporate a picnic into your trip, plan to visit a nearby park.

- You will receive your assigned date and time to attend the Festival in early spring. You will need to, at that time, make the necessary arrangements to attend, just as you would any other field trip.

- Questions? Call Cathy Smith at 603-6374; or csmith@caddo.k12.la.us**

SUMMER READING FESTIVAL

Announcing David Catrow, Children's Author!

In an effort to combine children's literature and art, the Caddo Association of School Librarians has invited David Catrow, author and illustrator of over fifty books for children to be our guest Saturday, April 28, 2012. He will be speaking and illustrating at 2 times and autographing his work afterward.

Teachers and students will recognize his illustrations in ***We the Kids***, an unbiased discussion of the foundation and principles of our republic, with funny kids and the obligatory dog to boot. Catrow's watercolor and crayon illustrations for ***Take Me Out of the Bathtub***, a collection of sing along traditional tunes set to loopy new lyrics, were praised for their cartoon-like absurdity and outlandish nature. And his slimy and goopy illustrations of a school science project gone awry in ***The Fungus That Ate My School*** will make you want to run for your life! Catrow's clever Dr. Seuss-like lively fungus overtakes a whole school while morphing itself into familiar school staff members. It's a laugh aloud read at its best!

Most recently, he is the author and illustrator of the **Max Spaniel** books, featuring Max, who by the way is NOT a dog! (or so he says)! Join the librarians in Caddo Parish Schools as we welcome David Catrow to ArtBreak, Summer Reading Festival!

SUMMER READING FESTIVAL FACTS

- ★ **The Transportation Departments of Caddo and Bossier Schools provide buses for all public schools.** Buses are allocated based on the number of students that you indicate on your forms. Buses for students with disabilities will also be provided. Please indicate the number of students requiring a wheelchair or walker.

 - ★ Your school system pays for your buses to and from the Summer Reading Festival. However, each school is responsible for securing their own transportation by contacting their school's bus drivers and if unable to secure transportation, by contacting the CPSB or BPSB Transportation Depts. prior to March 25, 2012.

 - ★ Your confirmation packet, distributed the week of March 17th, will confirm your school's assigned date, times, and schedule of activities.

 - ★ Each second grade teacher will receive a packet of information about the Summer Reading Program at the Public library to distribute to students upon your return to school.

 - ★ Students will also receive book marks reminding them to return to the Convention Center over the weekend with their families to participate in ArtBreak activities and to hear author/illustrator David Catrow speak. They can visit the CASL Book Fair to purchase his books and have them autographed.
-



SUMMER READING FESTIVAL

Second Grade Reservation Form

(Note: This form should have been submitted in November; use only for changes!)

SCHOOL _____

_____ YES! We are attending Summer Reading Festival, April 23-27, 2012, at the Shreveport Convention Center.

_____ YES! We are attending Summer Reading Festival, but we cannot attend on _____ due to a conflict with _____.

Please check dates of school field days, kindergarten roundups, and other possible conflicts prior to date selection. We will do our best to accommodate your needs.

_____ NO, we are sorry that we cannot come!

****Please note:** All 2nd grade students and all 2nd-5th grade special education students are eligible to attend Summer Reading Festival.

Students do not need to bring money. They will be reminded, however, to return to the Shreveport Convention Center on Saturday, April 28 to hear author/illustrator David Catrow and to purchase books to be autographed by him at the Summer Reading Book Fair sponsored by the Caddo Association of School Librarians.

Third Grade Teachers (First & Last Name)	# of students in class
1. _____	_____
2. _____	_____
3. _____	_____
4. _____	_____
5. _____	_____
6. _____	_____
7. _____	_____

Special Ed. Teachers	# of students	# of aides	# of wheelchairs
1. _____	_____	_____	_____
2. _____	_____	_____	_____
3. _____	_____	_____	_____
4. _____	_____	_____	_____

Special Accommodations: _____

Special Ed. students should be scheduled on the same day and time to allow for shared transportation.

ArtBreak Third Grade Days

Caddo Parish Public Schools, Bossier Parish Public Schools, the Very Special Arts Festival, and regional professional artists jointly collaborate to present four days of Hands-On Arts Activities for all third graders in the region. Students who receive Special Education services in grades 3-5 are also included at Third Grade Days.

The purpose of Third Grade Days is to encourage and demonstrate the use of the arts as both reinforcements for prescribed curriculum objectives and as subjects in and of themselves. Each hands-on activity directly correlates with a skill area being taught at the third grade level.

While attending Third Grade Days, students will participate in two hands-on activities and an interactive professional performance.

THIRD GRADE DAYS

QUICK CHECK

- Send in an **UPDATED** form only if your student count increases or decreases by more than five students.
 - Students should eat lunch either **BEFORE** or **AFTER** their trip to Third Grade Days. A complimentary beverage will be provided to students by the Convention Center. There is no room on site to eat lunch; however, if you want to incorporate a picnic into your trip, plan to visit a nearby park.
-

Questions? Call

THIRD GRADE DAYS FACTS

- ★ **The Transportation Departments of Caddo and Bossier Schools provide buses for all public schools.** Buses are allocated based on the number of students that you indicate on your forms. Buses for students with disabilities will also be provided. Please indicate the number of students requiring a wheelchair or walker.
 - ★ Your school system pays for your buses to and from Third Grade Days. However, each school is responsible for securing their own transportation by contacting their school's bus drivers and if unable to secure transportation, by contacting the CPSB or BPSB Transportation Depts. prior to March 25, 2012.
 - ★ Your confirmation packet, distributed the week of March 17th, will confirm your school's assigned date, times, and schedule of activities.
 - ★ Each attending teacher will receive an informative book containing directions for hands-on activities, curricular correlations, and suggested follow-up activities. The book may be emailed to the teacher, upon their request.
 - ★ Students are encouraged to purchase ArtBreak souvenirs including T-shirts, and reasonably priced gifts during their THIRD GRADE DAYS TOUR of ArtBreak.
-



Arts in Education

Third Grade Days Form

(Note: This form should have been Submitted in November; use only for changes!)

SCHOOL _____

_____ YES! We are attending ArtBreak Third Grade Days, April 23-27, 2012, at the Shreveport Convention Center.

_____ YES! We are attending ArtBreak Third Grade Days, but we cannot attend on _____ due to a conflict with _____.

Please check dates of school field days, kindergarten roundups, and other possible conflicts prior to date selection. We will do our best to accommodate your needs.

_____ NO, we are sorry that we cannot come!

****Please note:** All 3rd grade students and all 3rd-5th grade special education students are eligible to attend Third Grade Days.

Students are invited to bring money \$\$ for the purchase of Souvenirs. This will be allowed during the Performance time only!!

Third Grade Teachers (First & Last Name)	# of students in class
1. _____	_____
2. _____	_____
3. _____	_____
4. _____	_____
5. _____	_____
6. _____	_____
7. _____	_____

Special Ed. Teachers	# of students	# of aides	# of wheelchairs
1. _____	_____	_____	_____
2. _____	_____	_____	_____
3. _____	_____	_____	_____
4. _____	_____	_____	_____

Special Accommodations: _____

Special Ed. students should be scheduled on the same day and time to allow for shared transportation.



School Volunteers Form

Volunteers are (literally) the backbone of the ArtBreak Festival. ArtBreak offers the entire community an excellent opportunity to work together to show its pride in our children and their schools. The ArtBreak Festival will be held **Friday, April 27, through Sunday, April 29, 2012**. We need volunteers to work during the festival. In addition to adult volunteers, we can also use teams of students for specific duties. A volunteer shift confirmation, schedule, parking directions, and site map will be sent to you prior to the event.

NOTE: All schools participating in ArtBreak should commit to send volunteers to work at least one shift during the festival weekend. We understand that many of you send teachers to Third Grade Days; however, we still need your volunteers to help the Festival weekend! Volunteers can come from, PTA, art classes, band boosters, school service organizations, teachers, parents and students.

VOLUNTEERS MAKE ArtBreak HAPPEN!!

=====

* Volunteers will check-in at the information booth in the 1st floor lobby of the Shreveport Convention Center.

School _____

Volunteer Contact _____ Contact Phone _____

Email _____

Please sign our volunteers up for the following shifts (indicate the number of volunteers on the line next to the time and date):

ASSISTING DURING THE FESTIVAL WEEKEND: (Shifts include working with the professional artists in an activity booth.

___ **Friday, April 27** ___ 3:30-6:30 pm ___ 6:00-9:00 pm

___ **Saturday, April 28** ___ 9:00 am - 1:00 pm ___ 12:00-4:00 pm ___ 3:00-7:00 pm

___ **Sunday, April 29** ___ 11 am-3 pm ___ 2-6 pm

THIRD GRADE DAYS STUDENT VOLUNTEERS:

___ **Number of middle or high school students interested in assisting with Third Grade Days and Tours, April 23 – April 27. (You will be contacted to schedule students.)**

Volunteers to sign up NOW!!!

Complete this form and return it to ArtBreak by February 24th.



THIRD GRADE DAYS TEACHER VOLUNTEER FORM ARTS INSTRUCTORS and TEACHER ASSISTANTS

I am interested in working with the instructional program during ArtBreak Third Grade Days. Monday, April 23rd – Friday, April 27th.

- I prefer to work as a “lead” artist, teaching the interdisciplinary hands-on art activity. I am able and willing to make a commitment of at least three (3) days.
- I will attend the mandatory Lead Teacher/Artist Orientation (date, time & location to be determined) at which time I will receive my teaching assignment.
- I prefer to assist a lead teacher/artist during Third Grade Days.
- Yes. I have checked with my principal to clear these dates and he/she has agreed to release me for this assignment.

Schedule: (Check all days you can work)

- | | | |
|--------------------------|---------------------------|-------------------|
| <input type="checkbox"/> | Monday, April 23, 2012 | 8:00 am – 2:00 pm |
| <input type="checkbox"/> | Tuesday, April 24, 2012 | 8:00 am – 2:00 pm |
| <input type="checkbox"/> | Wednesday, April 25, 2012 | 8:00 am – 2:00 pm |
| <input type="checkbox"/> | Thursday, April 26, 2012 | 8:00 am – 2:00 pm |
| <input type="checkbox"/> | Friday, April 27, 2012 | 8:00 am – 2:00 pm |

Will you need a substitute during the work week?

- Yes, I will require a substitute.
- No, I will not require a substitute.

FESTIVAL WEEKEND

- | | | |
|--|---------------------|--------------|
| <input type="checkbox"/> I am interested in working during the festival weekend. Please send me additional information!! | Friday, April 27: | 3:30 – 8:30 |
| | Saturday, April 28: | 9:00 – 8:30 |
| | Sunday, April 29: | 11:00 – 5:00 |

Please share with us the following information:

TEACHER NAME	TEACHER SIGNATURE	DATE
--------------	-------------------	------

Daytime Phone: _____ Email: _____

Home Address: _____

School: _____ School Phone: _____

PRINCIPAL SIGNATURE	DATE
---------------------	------

Please return by Friday, February 24th to ARTBREAK

Advanced T-shirt Sales

Your school is invited to participate in **ArtBreak's advanced T-shirt sales blitz!** ArtBreak's high-quality T-shirts are screen printed on both sides in full color. T-shirts will be purple this year!

T-shirt sales are one of the ways that ArtBreak raises funds to help pay expenses. We are counting on **your** assistance with T-shirt sales to make this ArtBreak **GREAT!**

Sample T-shirts and sales flyers will be provided at the January Teacher Orientation!



T-SHIRT SALES QUICK CHECK

- Submit only **ONE** overall school order form.

- Keep \$1 from every shirt sold for your school.

- Your school wins a FREE T-shirt for every 35 that you sell.

- T-shirts will be sent via school mail to your school; if you wish to pick them up, check the box on the form and we will call you when they are ready.

- Please use the T-shirt flyer to send home with your students.**

- Submit **one check payable to ArtBreak.**

- Advanced sales deadline: Friday, March 16 to be eligible for the contest.

- Return sample T-shirt that we may add "the Back!" by March 16.

- Questions? Call ArtBreak at 673-6500.

- Put your school's name on the envelope of the ArtBreak T-shirt Sales Packet** and send to CPSB's gray box to ArtBreak or BPSB's green box to Mary Glass @ BIC.

**** T-SHIRT CONTEST ****

- ★ **A \$100 CASH prize** will be awarded for the "**Most Shirts Sold**" in advanced sales.
- ★ Any orders **AFTER** March 16th are **NOT** eligible for the contest and may be purchased beginning on APRIL 23rd, at the Shreveport Convention Center.



ARTBREAK 2012

SCHOOL T-SHIRT ORDER FORM

Orders must be received by ARTBREAK by Friday, March 16th, in order to be eligible for the CASH prizes and to insure delivery before the festival.

School _____

Name of Contact _____ Email _____

Contact's Day Phone _____ Evening Phone _____

_____ Please send our t-shirts through school mail!

_____ Please call me at _____ when our order is ready; I will pick it up at the SRAC offices, 400 Clyde Fant Parkway!

Remember: T-Shirts sell for \$12, \$14 and \$16. Your school keeps \$1 for each shirt sold and returns the balance to ARTBREAK. (If your school sells 250 T-shirts, you will make \$250.) You will also receive a FREE T-shirt for every 35 shirts your school sells as our way of saying "THANKS" for participating!!!

	# PER SIZE		PRICE			SUB-TOTAL
Youth:	Small (6-8) _____	X	\$12.00	=	_____	
	Medium (10-12) _____	X	\$12.00	=	_____	
	Large (14-16) _____	X	\$12.00	=	_____	\$ _____
Adult:	Small (32-34) _____	X	\$14.00	=	_____	
	Medium (36-38) _____	X	\$14.00	=	_____	
	Large (40-42) _____	X	\$14.00	=	_____	
	X-Large (44-46) _____	X	\$14.00	=	_____	
	XX Large (48) _____	X	\$16.00	=	_____	
	XXX Large (50) _____	X	\$16.00	=	_____	\$ _____

Sample T-Shirt (Youth Large) 1 X \$12.00 = \$12.00 \$ _____

(If you return this sample shirt with your order form you will not be charged for it.)

of Free T-shirts: _____ **(1 for every 35 shirts sold)**

Size(s): _____

SUBTOTAL \$ _____

CREDIT – TOTAL# OF T-SHIRTS ORDERED **minus**
 (Count \$1 for each T-Shirt sold from the Subtotal) _____ **X \$1** \$ _____

GRAND TOTAL DUE TO ARTBREAK \$ _____

Please attach ONE check payable to ARTBREAK and send with this form to
 SRAC, 400 Clyde Fant Parkway, Shreveport, LA 71101.

Questions????? Contact ARTBREAK at 673-6500. THANK YOU FOR YOUR ORDER!

School Exhibit Booths

ArtBreak School Exhibit Booths are the perfect place to show off YOUR school and display the talents, projects, awards, creations, and programs that are unique to your school.

Exhibit Booths are placed throughout the Convention Center and are moved around annually to provide maximum public exposure on a rotating basis!

School Exhibit Booth Set Up!!

Friday, April 20th noon – 8:00 pm
and Saturday, April 21st
from 9:00 am – 8:00 pm at
Shreveport Convention Center

EXHIBIT BOOTH QUICK CHECK

- Fill out your request form and return to ArtBreak no later than **Friday, Feb. 24th**.
- Send in your \$50 REFUNDABLE deposit check. Enclose a SEPARATE check for additional booth spaces no later than **Friday, Feb. 24th**.
- Clearly label ALL display materials, equipment and artwork with your school's name.**

**Sell Art Related Items and
Make \$\$\$\$ for your school!!**

EXHIBIT BOOTH FACTS

- ★ Each Booth space measures 10' x 10'; electricity will be provided, if requested.
- ★ Each school may request **one** Booth space at **NO CHARGE**, provided that they submit a \$50 REFUNDABLE deposit check. Extra Booth space is available for an additional \$50 fee per booth. **Your deposit WILL NOT be refunded for the following:** Failure to set up your booth by 8:00 pm, Saturday, April 21st; causing permanent damage to Convention Center walls or floors; disassembling your booth prior to 5:00 pm on Sunday, April 29th; or failing to remove your booth before 7:00 pm on Sunday, April 29th.
- ★ Teachers may receive ½ day off paid to work on their booths on Friday, April 20th from 12:00 pm to 3:00 pm. Request in advance for approval from supervisor.
- ★ A confirmation form verifying the approved number of booths will be provided to your school.
- ★ **CPSB Only!!** will pick up and return your equipment, display boards, and artwork **if requested on your reservation form.** They WILL NOT return items that they did not pick up.
- ★ **BPSB** schools will transport their own booths.

YOUR SCHOOL PROVIDES

- ★ **Freestanding** display equipment, such as bulletin boards, dividers, display boards, etc.
- ★ See the Booth Construction format on next page for information.
- ★ **ARTWORKS** created by students throughout the school year –may be priced for sale in your booth. You **MAY NOT** sell food or beverage items. ArtBreak does not charge a commission on sales. **ArtBreak is not responsible for any lost or stolen items.**
- ★ **Volunteers** to set up and strike your booth and oversee sales or hands-on activities, if needed... these are separate from the ArtBreak volunteers!



SCHOOL BOOTH FORM

SCHOOL _____ PARISH _____

Booth Contact _____ Contact Phone _____

Email _____

Please complete the following:

___ Yes, we want 1 exhibit space (\$50 refundable deposit check)

___ Yes, we want **more**...please reserve ___ exhibit spaces (\$50 refundable deposit check and \$50 nonrefundable fee for each extra 10'x10' space)

___ Our check is enclosed. **(All public and private schools must mail a \$50 REFUNDABLE DEPOSIT prior to February 24th; deposit will be returned to you after ArtBreak if you set up your booth)**

___ Our check will be sent by April 1st. **First booth for schools is free WITH REFUNDABLE \$50 DEPOSIT.**

___ We need electricity. Please give us ___ 110 outlet(s). (One is free; others are \$15 per outlet.) We will use electricity for the following:

_____.

Bossier Parish Schools will transport their own booths.

FOR CADDO PARISH PUBLIC SCHOOLS ONLY:

Select one only please:

___ We need a truck to pick up our School Exhibit Booth display from our school site.

___ **We will be prepared for pick-up on April 18th and 19th for our installation on Friday, April 20th.**

***PLEASE NOTE: All display items need to be clearly marked with your school's name and ready to be picked up when scheduled.**

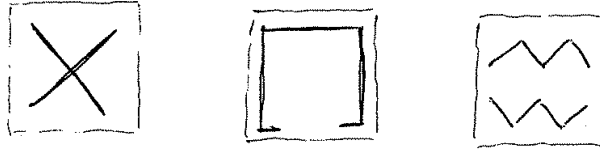
___ We **DO NOT** need help transporting our supplies and equipment.

PRINCIPAL _____ DATE _____

Complete this form and return it to ArtBreak by February 24th.

School Exhibit Booths (Continued)

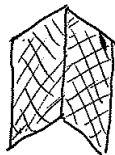
Here are some suggestions for ArtBreak school display booths:
 All areas need to fit within a 10' x 10' square marked with tape on the floor.
 Here are a few example top views of booth areas:



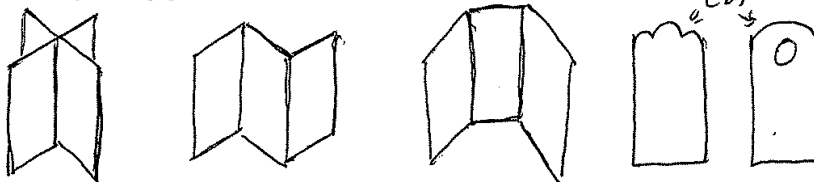
These are examples of booths:

Portable partitions "display boards", range in price from \$200 - \$600 per panel
 Available from Sax Arts and Crafts, Triarco Arts and Crafts, or lots on the internet.
 Very durable, multi purpose.

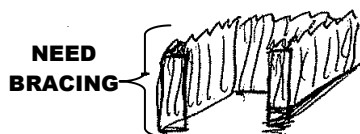
4' x 8' "standard" size Lattice is popular but requires structural frame. The cost would vary from \$180- \$280 (4 frames) depending on finish and thickness of lattice, hinges, and paint. Fairly durable, requires carpentry.



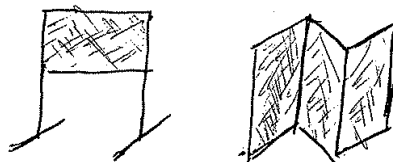
Blueboard Styrofoam, is the cheapest, but least durable for long term. Four sheets would cost \$100.00 available from Regal Plastics on Greenwood Rd. (note Shreveport Arts Council and Artbreak for 5% discount) Easy to fasten pictures, paint, and support.
 Can be cut easily with jigsaw



Fencing panels are also popular and easy to assemble. Cost about \$40.00 a panel 6' x 6' at Home Depo or Lowes. Need hinges and a little bracing.



2" PVC piping (thinner is too flimsy) and chicken wire. Cost about \$100.00 minimal mostly in fittings.



School Performances

The student performances at ArtBreak are always stellar! Festival goers are treated to a wide variety of entertaining acts, from choirs to acrobats! ArtBreak will showcase at least one **20 minute** performance from each school! Any group that your school would be proud to showcase at ArtBreak can perform, including rock bands, dance groups, etc. They do not have to be a part of your school's organized arts program; however, the group must be ENDORSED and sponsored by your school.

SCHOOL PERFORMANCE QUICK CHECK

- Fill out your request form and stage plot form. Return to ArtBreak no later than **Friday, February 24th**.
 - To request an additional performance**, photocopy both the request and stage plot forms.
 - Questions? Call ArtBreak at 673-6500.**
-

SCHOOL PERFORMANCE FACTS

- ♪ Many of you participate in All-Parish Honors Performances. **We would like to highlight YOUR SCHOOL with an individual school performance.**
 - ♪ **Performances can consist of ANY play, musical performance, dance, tumbling routine**, etc., that your school has done during the year – you **do not** have to create a “new” performance for ArtBreak!
 - ♪ **Be as specific as possible** on your forms regarding your stage needs and time or day preferences. **(Where possible, we will honor these on a “first-come” basis.)**
 - ♪ Use a separate request and stage plot form for each performance slot that you request. Copy as many as you need!
 - ♪ The Performance Chair will call you after confirmation packets are sent to confirm your time, date, stage and equipment needs.
-



School Performance Reservation Form

PLEASE NOTE: This is a request for **one 20-minute time slot** at ArtBreak. Every school is requested to perform at the festival. *If for any reason this group is unable to perform, CONTACT ArtBreak IMMEDIATELY.*

SCHOOL _____ Contact _____

Evening Phone _____ Email _____

Name of Performing Group (to post on schedule) _____

of students performing (please be as accurate as possible!) _____

Performance Type: _____

Will anyone in this group ALSO be participating in Honors Performances? Y N

ArtBreak will provide the following equipment. Please indicate your needs:

____ # of chairs ____ # of choral risers ____ CD player ____ # of music stands

____ # of microphones (8 max) ____ # of 110v electrical outlets ____ Piano(s)

What other equipment will you be bringing? _____

Please indicate your date and time preference for your performance (use a "1" for first choice; a "2" for second choice; and a "3" for third choice):

____ **Friday, April 27: 4:00 pm-7:00 pm**

____ **Saturday, April 28: ____ 10:00 am-noon ____ noon-4:00 p.m. ____ 4:00-7:00 pm**

____ **Sunday, April 29: noon – 3:00 pm**

Show us how you want chairs arranged, microphones and risers situated, etc. If you just want a bare stage, please indicate so. **We will send you the date, time and stage assignment. PLEASE DRAW YOUR STAGE PLOT HERE:**

STAGE FRONT

NOTE: Schools are responsible for making transportation arrangements. Complete this form and return it to ArtBreak by February 24th.



JURIED EXHIBITIONS: 2012 Music Composition Awards

Best of Show in Composition:

\$500 Savings Bond – High School

Best of Piano Composition:

\$200 Savings Bond – High School

\$100 Savings Bond – Middle School

Best of Group Instrumental to include at least four instruments:

\$200 Savings Bond – High School

\$100 Savings Bond – Middle School

Best of Solo Instrument with or without Accompaniment:

\$200 Savings Bond – High School

\$100 Savings Bond – Middle School

JURIED MUSIC EXHIBITION

The goal of the Juried Music Composition is to showcase and reward outstanding musical composition skill and talent. Compositions will be judged based on originality, chord structure, dynamics, timbre and other fundamentals within the scope of the composition. ArtBreak jurors may select one student winner in each of the composition categories for middle and high school students.

MUSIC COMPOSITION ENTRY QUICK CHECK

- Eligible students must currently be in grades 6 through 12.
 - Music Composition Entries are due on Tuesday, April 3rd, at artspace, from 3:30 pm - 5:30 pm.** Late entries will not be accepted! Submit your Printed list of student work. Include student's name, title of piece, and level. Please ensure that the entry form is signed and dated by the student and teacher.
 - Any entries that do not meet all requirements will be disqualified. Final decisions are at the discretion of the jurors.
 - Jurying is a closed event.
 - Winners will be announced to schools on Wednesday, April 18th.
 - Questions? Call ARTBREAK at 673-6500.
-

COMPOSITION DO'S

- DO submit original non-published student work.
 - DO use the official full-page entry form that is in your packet and fill out completely. Print or type.
 - DO submit works created by one student, not groups of students.
 - Do use a computer program to write final composition with total instrumentation.
 - Do number each page of the composition and use part of the title for identification.
 - Do submit a sample performance of the work on CD (1 copy).
-

ENTRY FORM ATTACHMENT

- Make ONE copy of the completed entry form (1 copy + original = 2 TOTAL).
 - Make FOUR paper copies of the student's composition piece (4 copies + original = 5 TOTAL). It's a good idea to make an EXTRA copy for your records.
 - Attach the entry forms to the BACK of the original and one copy of the piece. Make sure the entry form FACES you when you turn the PIECE face down.
 - Attach the entry forms with paperclips. ***DON'T use any staples, tape, or glue to prepare your entries!***
 - Submit work in a clasp envelope, labeled with school name and grade level.
-

COMPOSITION DON'TS

- DON'T submit work with the composer's name or any reference to school in the composition.
 - DON'T submit work that has been laminated, or on thin paper so that it will tear.
-



MUSIC COMPOSITION ENTRY FORM

SCHOOL _____

Name _____ Age _____ Grade _____

Home Address _____ City _____

Zip _____ Home Phone _____ Email _____

Teacher (First & Last) _____

Teacher Phone _____ Email _____

Title of Work: _____

Please check one box for **Grade Level** and one box for **Category**.

Grade Level: 6th 7th 8th 9th 10th 11th 12th

- Category:** Piano
- Group Instrumental (at least 4 instruments)
- Solo without Accompaniment
- Solo with Accompaniment
- Vocal Solo with Accompaniment

Statement of Originality: *I certify that this is an original music composition as outlined in the Entry Guidelines and that all work was completed by the student.*

Student's Signature

Teacher's Signature

Date

Attach copies of original form to back of work according to entry guidelines.

Leonard and Betty Phillips Foundation Memorial

Juried Exhibition:

VISUAL



The Leonard and Betty Phillips Foundation Memorial Juried Visual Exhibition makes a powerful, positive statement about the quality of arts education in Caddo and Bossier Parish Schools! Over 1,000 pieces of Visual Art are on view all weekend for every visitor to see!

We LOVE to show off your school!
EVERY student who enters in the exhibition is a winner!

Levels are divided by grades in the Visual Competition starting with ECE to 12th.



2012 VISUAL AWARDS

The receipt of an ArtBreak award entitles the Shreveport Regional Arts Council to unlimited reproduction rights to the student's work; however, the original artwork is returned to the student (there is no purchase award).

- **\$500 BEST OF SHOW for VISUAL:** One overall award for outstanding Visual Artwork.
- **\$500 BEST OF SHOW Very Special Arts Fest:** There is one **Special Education** \$500 Best of Show Award in Visual Art. This award is for student artists with disabilities who are enrolled in the Special Education program. There are \$200 awards given to outstanding students in Elementary, Middle School, and High School.
- **\$500 High School and \$250 Middle School Visual Portfolio Awards:** There is one \$500 Visual Portfolio Award presented to an outstanding high school junior or senior and one \$250 Visual Portfolio Award presented to an 8th grade student. Each school may submit portfolios for consideration.
- **\$200 Best of Grade/Level:** There is one \$200 Best of Level Award per grade level ECE – 12 in Visual Art (14 awards).
- **\$100 Image of ArtBreak Awards:** Up to 10 visual pieces will be selected from all grade levels. These selected pieces will be reproduced and used to create ArtBreak stationary, prints, t-shirts, and other promotional material throughout the year.
- **\$100 Media Awards:** There are designated \$100 media awards in the Visual Arts that recognize skill sets, and creativity in a variety of media.
 - 1) These media specific awards will be presented in the Elementary, Middle, and High School divisions and will be listed in the Guidelines.
 - 2) Visual Art media specific awards are as follows:

Drawing	Watercolor
Painting	Photography/Graphic Design / Digital Media
Printmaking	Collage/Relief
Pastel (oil/chalk)	3-D
Textile/Fiber	Mixed Media

* The awards are made at the discretion of the judges.

- **Jurors Choice Awards:** There are 3 Jurors Choice Trophies per grade level in Visual Art.
- **Showcase Ribbons:** Every piece selected by the school for the ArtBreak Juried Visual Exhibition will receive a showcase ribbon.
- **Student Choice Award:** Each school may select two students to participate in a Student Choice Workshop in Visual Art. Students review the ArtBreak Juried Visual Exhibition, selecting pieces worthy of the Student Choice Award Ribbon.

Savings Bonds: Unless otherwise indicated, all awards are made in the form of a Savings Bond to be redeemed at the downtown headquarters of Chase Bank – 400 Texas Street, Downtown Shreveport - prior to July 1, 2012.

Juried Visual Exhibition...!

I. ELIGIBLE ENTRIES PER SCHOOL

A. ELEMENTARY SCHOOLS (ECE – 5th grades): Caddo and Bossier Parish Schools will be eligible to enter **up to 5%** of the student population into the Visual Exhibition. This will apply to public schools, private schools, home school associations, charter schools and the Talented Arts Program.

- 1)** The entries should reflect the student population by grade level.
- 2)** The teacher will divide the total number of entries equitably (but not necessarily equally) among each of the seven grade levels (ECE – 5).
- 3)** A student may have up to two (2) entries per school.
- 4)** The guidelines for five (5) entries per school for the VERY SPECIAL ARTS FEST **Special Education Showcase** in Visual Arts and in Literary Art have not changed.

B. MIDDLE SCHOOL (6th - 8th grades) and High School (9th – 12th grades):

Middle School and High School entries will be based on enrollment in the Visual Arts Classes. Visual Instructors should divide the entries equitably on all grade levels (6-8 and 9-12) based on enrollment numbers.

- 1)** The teacher will divide the total number of entries among each of the three Middle School grade levels (6-8) and four High School grade levels (9-12) equitably (but not necessarily equally).
- 2)** A student may have up to two entries per school. The Middle School and High School entries apply for Caddo and Bossier Public Schools, private schools, home school associations, charter schools and the Talented Arts Program.
- 3)** The school may enter **10%** of work by students enrolled in the **Visual Arts** classes. For example:
 - a)** In all semesters, there are 200 students enrolled in Visual Art; the school is eligible to enter 20 pieces based on that enrollment. The teachers together are eligible to enter a total of 20 pieces of art.
 - b)** A high school employs two teachers who instruct Art I, II, III, and IV, Ceramics, and Photography. There are 450 students enrolled in arts classes. The teachers together are eligible to enter a total of 45 pieces of art.

Juried Visual Exhibition

Very Special Arts Festival (VSAF)

The Very Special Arts Festival (VSAF) is an international organization dedicated to enriching the lives of children, youths, and adults with disabilities. This is the 20th year that VSAF has been an integral part of ArtBreak.

VERY SPECIAL ARTS FESTIVAL (VSAF) QUICK CHECK

- Check the box at the top of your **Visual** entry forms next to VSAF. This tells the committees and jurors to judge this work with other VSAF pieces.
 - Visual Entries are due on Tuesday, April 10th & Wednesday, April 11th**
Late entries will not be accepted! Location TBD.
 - Questions? Call ArtBreak at 673-6500.
-

VERY SPECIAL ARTS FESTIVAL FACTS

- ★ Each school receives a TOTAL of 5 visual entry forms SPECIFICALLY for VSAF Competitions. Forms are included in your packet.
 - ★ **All guidelines from the Visual competitions apply.**
 - ★ **Entry forms should be marked for the appropriate level, according to the student's enrolled grade. You may use your 5 entries in any appropriate level.**
 - ★ There will be one overall "Best of Show" Visual Winner.
 - ★ One winner for outstanding student in Elementary, Middle and High School.
 - ★ All awards will be presented at the ArtBreak Awards Ceremony, Sunday, April 29th, beginning at 2:00 pm on the Chase Stage with the ArtBreak Idol finals.
 - ★ VSAF entries will be displayed with their school's other entries.
-

Juried Visual Exhibition

**Please read all of the guidelines in this guide for exhibitions to avoid confusion or errors on entries!*

VISUAL ENTRY QUICK CHECK

- Entries are due Tuesday, April 10th and Wednesday, April 11th from 3:30 pm – 5:30 pm. NO LATE ENTRIES WILL BE ACCEPTED. Location to submit entries is to be determined. See fact sheet for Portfolio Entry information.
- Submit your list of student work; keep a copy for yourself! Lists should be typed or printed and alphabetized by LAST name, and include title and grade level. **Only one grade level per list.** See sample list.
- Any entries that do not meet all requirements will be disqualified. Final decisions are at the discretion of the jurors. In the event that an award-winning piece is disqualified after the jury process is completed, the award will not be given.
- Jurying is a closed event. Teachers and participants are not permitted during this process.
- Winners will be announced to schools on Wednesday, April 18th.
- All qualified entries will receive a Showcase Ribbon, to be presented to the teacher at the time of acceptance of works.
- All Juried Awards, EXCEPT Student Choice and Showcase, will be presented at the ArtBreak Awards Ceremony, Sunday, April 29th. **Work should be picked up IMMEDIATELY** following the Awards Ceremony (**except for art displayed in the Winner's Circle**) at 5:00 pm on Sunday, April 29th.
- Award-winning work will be retained by ArtBreak for 1 year; it will be framed and exhibited in the area. Students will be notified when it is ready for pickup the following year, following ArtBreak 2012.
- Indicate Very Special Arts Festival entries by checking the appropriate box on the entry form.
- Questions? Call ArtBreak at 673-6500.

CATEGORIES FOR VISUAL WORK

DEFINITIONS: 2 DIMENSIONAL & 3 DIMENSIONAL
(RELIEF SCULPTURE & SCULPTURE IN THE ROUND)

3 Dimensional works will be defined as follows: Sculpture is the art of making figures or designs in relief or in the round. Sculpture may be made by carving (subtractive process), by modeling (additive process), or by assembly (assemblage). **Sculpture in the Round** is freestanding and may be viewed from all sides. **Relief Sculpture** is created on or against a background surface, with forms projecting from the background and range from bas-relief (low) to alto-relief (high).

Juried Visual Exhibition (Continued)

ARTWORK DO'S

- DO submit **original** student work created by one student, not groups of students.
 - DO submit ORIGINAL Computer Generated Art, not enhanced clip art or photographs.
 - DO submit 3-D works in a **labeled** box for storage and protection. Correctly attach the entry forms to a sturdy base attached to each piece.
 - DO mount or mat ALL 2-D work with a single piece of black or white poster board, railroad board or construction paper (**up to 8 ply maximum weight**).
 - DO submit work that will go through a standard door (36" x 80") fully assembled. Be prepared to assist the committee with setup for complex pieces.
 - DO make visible width of mat or mount 2" x 2" x 2" x 2" OR 2" x 2" x 2" x 3" (bottom).
 - DO square interior and exterior corners.
 - DO submit work that is dry and ready for display.
 - DO submit work that will endure four weeks of handling and exhibition. Work that has been put together with hot glue tends to fall apart.
 - DO use the official 3-part entry forms that are in your packet.
 - DO check the boxes for VSAF as appropriate.
 - DO sign and date the form. Print or Type. Have the student and parent sign the form. (You may use a copy of the form to send home for parent's signature)
 - DO indicate a price if the work is for sale. If the work is NOT for sale, write "NFS."
 - DO prepare an alphabetized list of entries, by grade to turn in with your work. See sample.
-

ARTWORK DON'TS

(THESE WILL DISQUALIFY YOUR STUDENTS' WORK!)

- DON'T submit unfired clay pieces. Clay sculpture will only be accepted if fired.
 - DON'T submit sculpture that is very fragile, or that is made of fragile materials.
 - DON'T submit posters or projects created for science or social studies fairs or other contests.
 - DON'T submit copies of another person's artwork.
 - DON'T submit work made from kits or commercial molds.
 - DON'T submit work made from mechanically reproduced designs (dittos, photocopies, computer copies).
 - DON'T submit **heavily** matted or mounted pieces. No Foam Core or matting with backing.
 - DON'T submit mats that are DOUBLE, COLORED, or ENHANCED. **They will not be accepted.**
 - DON'T submit work on canvas board, framed work, work on stretcher frames, or anything heavier than poster board (up to 8 ply maximum weight). Stretched canvas or canvas board can only be used for portfolio submissions. An appropriate easel **must** accompany
-

Juried Visual Exhibition (Continued)

**Please read all of the guidelines in this guide for exhibitions to avoid confusion or errors on entries!*

ENTRY FORM QUICK CHECK

- Fill out form completely and sign (teacher and student)

- Tear off the WHITE original.

- Divide the WHITE original into two parts where indicated.

- Attach the TOP of the WHITE form to the back, UPPER LEFT-HAND CORNER of all 2-D pieces.

- Turn the BOTTOM portion of the WHITE copy over and tape it to the LOWER LEFT-HAND CORNER on the back of the piece so that it hangs below the mat (do not use tape on the FRONT of the piece). See sample form and placement.

- Alphabetize the YELLOW copies by level and turn them in to ArtBreak with your list of entries by level.

- Keep the PINK copies for your files.

- FOR 3-D WORK: Attach the WHITE forms as above, using the base of the work, OR prepare a piece of poster board to place under the sculpture for display and attach as above, even on pottery.

Visual Lists Sample:


University Elementary – Grade Level 3		
Name	Title	Grade
Dunlap, Kirk	The Pelican	3
Herrin, Cindy	Floating Face	3
Mitchell, Jay	Masai Woman	3
Porter, Briana	The Colors of Tanzania	3
Priess, Matt	The Grazing Zebra	3
Young, Jordan	Magnolia	3

University Elementary - VSAF Entries		
Name	Title	Grade
Brian, Joshua	My Flower	3
George, Carmen	The Stand	2
Michaels, Joe	Self Portrait	K
Prince, Deanna	Friends	2
Williams, Ilesha	Treats	ECE

Juried Visual Exhibition (Continued)

*Please read all of the exhibition guidelines in this guide to avoid confusion or errors on entries!

SAMPLE VISUAL ENTRY FORM



Visual Entry Form

VSAF

School _____

Name _____ Age _____ Grade _____

Home Address _____

City _____ Zip _____ Home Phone _____

Teacher (First & Last) _____

Title of Work _____

Medium _____ Price _____

Statement of Originality: *I certify that this is an original work of art as outlined in the Entry Guidelines and that all work was completed by the student. By entering this work in ArtBreak, I understand and agree that this piece may be selected for any number of awards and recognitions. This may result in the piece being used for a year or reproduced for specific use by McDonalds' Restaurants, AT&T, The Real Yellow Pages, artspace, Feist Weiler Cancer Center, and others to be determined. The awards include: Best of Show (\$500), Best of Level (\$200), Best of Show – VSAF (\$500), Media Awards (\$100), and Image of ArtBreak Awards (\$100), and Jurors Choice Awards.*

Student's Signature _____ Date _____

Parent's Signature _____ Date _____

Teacher's Signature _____ Date _____

Attach both portions of original (white) form to back of work according to guidelines in the ArtBreak Participation Guide.
ArtBreak DOES NOT ASSUME LIABILITY FOR LOST OR STOLEN ART!

Name _____

Age _____ Grade _____ Price _____

Title of Work _____

Teacher _____ Medium _____

School _____

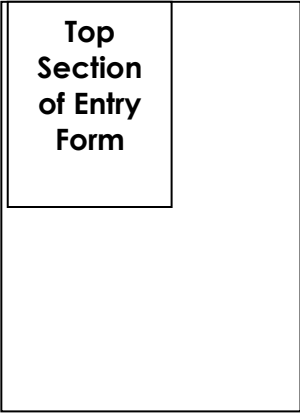
Visual Entry Form Placement

FRONT SIDE OF ART



Bottom
Section of
Entry Form

BACK SIDE OF ART



Fill out, cut apart & attach each label so that it appears on the front, lower right-hand corner of each piece.

✂-----
Name _____ Grade _____
Title of Work _____
Teacher _____ Level _____
Medium _____ Price _____
School _____

✂-----
Name _____ Grade _____
Title of Work _____
Teacher _____ Level _____
Medium _____ Price _____
School _____

✂-----
Name _____ Grade _____
Title of Work _____
Teacher _____ Level _____
Medium _____ Price _____
School _____

✂-----
Name _____ Grade _____
Title of Work _____
Teacher _____ Level _____
Medium _____ Price _____
School _____

✂-----
Name _____ Grade _____
Title of Work _____
Teacher _____ Level _____
Medium _____ Price _____
School _____



Jimmy Dunn Memorial High School Portfolio Competition and Middle School Portfolio Competition

The Jimmy Dunn Memorial Visual Portfolio Award is presented to an outstanding high school junior or senior and an outstanding 8th grader. The Visual Portfolio requirements for 8th grade middle school students are the same as the High School Portfolio, except that four pieces will be submitted. Submitted portfolios must include the following:

All portfolio entries must include:

1. The student's original artwork - SIX visual pieces for high school and FOUR visual pieces for middle school.
2. The student's sketchbook / journal.
3. The student's taped interview conducted by ArtBreak Management.
4. The student's Written Artist's Statement. Please visit the following website for samples and instructions on how to correctly prepare an Artist's Statement:
<http://www.mollygordon.com/resources/marketingresources/artstatemt/>.
5. The signature forms with both student's and teacher's signatures.

All submitted portfolios will be displayed at ArtBreak.

PORTFOLIO QUICK CHECK

- Portfolio entries are due **Tuesday, April 3rd** from 3:30 pm – 5:30 pm at **artspace**, 710 Texas St., Downtown Shreveport. **Visual Portfolio Interviews will be by appointment on Thursday, April 5th beginning at 3:30 pm at artspace.**
 - Only work completed over the last two years and **COMPLETED UNDER THE DIRECTION OF A CADDO OR BOSSIER PARISH PUBLIC OR PRIVATE SCHOOL INSTRUCTOR AT SCHOOL** is eligible for the competition. Portfolios that do not contain the correct number of pieces will be disqualified.
 - Students entering the portfolio competition ONLY may include works on canvas board or stretched canvas.** An appropriate easel must be supplied for display purposes.
 - Each student's portfolio should be clearly labeled and presented separately. 3-D pieces must be packaged separately in closed, labeled boxes.
 - Complete the enclosed portfolio entry forms. Cut apart and attach the individual labels to the back, lower left-hand corner of each piece.
 - Portfolio entries are NOT eligible for entry into the Juried Visual Competition.
 - Sketchbook/Journal should be turned in with the portfolio. The sketchbook/journal will show the student's process of developing their final artwork.
 - FAILURE TO TAPE THE INTERVIEW, TURN IN A SKETCHBOOK, WRITTEN ARTIST'S STATEMENT, SIGNED AGREEMENT, OR SUBMIT THE CORRECT NUMBER OF PIECES WILL RESULT IN DISQUALIFICATION FROM THE COMPETITION.**
-

Visual Portfolio Entry Form

(page 1 of 2)

Visual Portfolio Competition: Select One

High School

Middle School

SCHOOL _____

Principal _____

Students Name _____ Grade _____

Home Address _____ City _____

Zip _____ Home Phone _____ Email _____

Teacher submitting Portfolio (First & Last):

Teacher email _____ Cell Phone _____

Please list the following for each piece:

TITLE	MEDIA	2D/3D	TEACHER
1. _____			
2. _____			
3. _____			
4. _____			
5. _____			
6. _____			

Statement of Originality: *I certify that each piece in this Portfolio is an original work of art wholly created and completed by the student as outlined in the 2012 Entry Guidelines.*

Student's Signature _____

Teacher's Signature _____

Date _____



STUDENT PORTFOLIO ENTRY AGREEMENT (page 2 of 2)

Check the following boxes and sign below:

I am submitting:

- Six pieces (high school) or four pieces (middle school)
- Sketchbook / Journal
- Artist's Statement
- I will be available to videotape an interview on Thursday, April 5th between 3:30 pm – 5:30 pm at **artspace** (710 Texas Street, Shreveport).
- I understand that the day and time will be assigned by ArtBreak and communicated to my teacher on April 3rd when my work is submitted.

By signing this agreement, I certify that each piece in my Portfolio is an original work of art that I completed as a school-based assignment. Failure to adhere to any of the above stipulations or failure to turn in all required components will result in the disqualification of my Portfolio.

Student Name (Please Print)

Student's Signature

Date

Parent's Signature

Date

Student contact information:

After School: _____ Email: _____

My signature verifies that the work in this Portfolio was completed by the student as a school-based assignment.

Teacher's Signature

Date

Teacher's Name (Please Print)

Teacher's contact information: Email: _____

Day: _____ Evening: _____

Leonard and Betty Phillips Foundation Memorial

JURIED EXHIBITION: LITERARY



The Leonard and Betty Phillips Foundation Memorial Juried Literary Exhibition makes a powerful, positive statement about the quality of arts education in Caddo and Bossier Parish Schools! Literary Arts are on view all weekend for every visitor to see!

We LOVE to show off your school!
EVERY student who enters in the exhibition is a winner!

Levels are divided by grades in the Literary Competition starting with ECE to 12th.



2012 LITERARY AWARDS

(All awards are given at the Jurors' discretion.)

The receipt of an ArtBreak award entitles the Shreveport Regional Arts Council to unlimited reproduction rights to the students' work.

- **\$500 BEST OF SHOW LITERARY:** There is one overall award for the outstanding work in Literary.
- **\$500 BEST OF SHOW Very Special Arts Fest:** There is one **Special Education** \$500 Best of Show Award in Literary Art. This award is for student artists with disabilities who are enrolled in the Special Education program.
- **\$500 High School and \$250 Middle School Literary Portfolio Award:** There is one \$500 Literary Portfolio Award presented to an outstanding high school junior or senior and one \$250 Literary Portfolio Award presented to an 8th grade student. Each school may submit Portfolios for consideration.
- **\$200 Best of Grade/Level:** There is one \$200 Best of Level Award per grade level, ECE – 12 in Literary Art (14 awards).
- **\$200 Best of Elementary, Middle and High for Very Special Arts Festival.**
- **\$100 Image of ArtBreak Awards:** Up to 10 pieces will be selected from all grade levels. These pieces will demonstrate the creativeness and excitement of the students' writing. These selected pieces will be reproduced and used to create ArtBreak promotional material throughout the year.
- **\$100 Genre Awards:** There are designated \$100 Genre Awards in Literary Arts that recognize skill sets and creativity in a variety of styles of writing.

Literary Art specific awards are as follows:

Prose:

- a) Personal Narrative
- b) Short Story
- c) Humorous
- d) Essay
- e) Descriptive

Poetry:

- Humorous
- Narrative
- Haiku
- Rhyming
- Free Verse

- **Jurors Choice Awards:** There are 3 Jurors Choice Trophies per grade level in Literary Art.
- **Showcase Ribbons:** Every piece selected by the school for the ArtBreak Juried Literary Exhibitions will receive a showcase ribbon.
- **Student Choice Award:** Each school may select two students to participate in a Student Choice Workshop in Literary Art. Students review the ArtBreak Juried Literary Exhibition, selecting pieces worthy of the Student Choice Award. The award is a ribbon.

Savings Bonds will be issued unless otherwise indicated, all awards are made in the form of a Savings Bond to be redeemed at the downtown headquarters of Chase Bank – 400 Texas Street, Downtown Shreveport - prior to July 1, 2012.

NOTE: *The ArtBreak Festival will retain all winning entries. All winning pieces will be copied and bound into a booklet. Copies of the book will be sent to the school and student.*



Juried Literary Arts Exhibition... NEW!

II. ELIGIBLE ENTRIES PER SCHOOL

A. ELEMENTARY SCHOOLS (ECE – 5th grades) MIDDLE SCHOOL (6th - 8th grades) and HIGH SCHOOL (9th – 12th grades): Caddo and Bossier Parish Schools will be eligible to enter **up to 5%** of the student population into the Literary Exhibition. This will apply to public schools, private schools, home school associations, and charter schools.

- 1) The entries should reflect the student population by grade level.
- 2) The teacher will divide the total number of entries equitably (but not necessarily equally) among each of the grade levels.
- 3) A student may have up to two (2) entries per school.
- 4) Each school will receive five (5) entries per school for the VERY SPECIAL ARTS FEST **Special Education Showcase** in Literary Arts.

Very Special Arts Festival (VSAF) Juried Literary Exhibition

The Very Special Arts Festival (VSAF) is an international organization dedicated to enriching the lives of children, youths, and adults with disabilities. Disabled students with an IEP are eligible to enter the VSAF. This is the 20th year that VSAF has been an integral part of ArtBreak.

VERY SPECIAL ARTS FESTIVAL FACTS

- ★ **VSAF Literary entries are due on Tuesday, April 10th and Wednesday, April 11th.**
Late entries will not be accepted!

- ★ Each school receives a TOTAL of 5 literary entry forms SPECIFICALLY for VSAF Competitions. Forms are included in your packet. Please note the VSAF **Literary** forms are **yellow**, not white.

- ★ **All guidelines from the literary competition apply.**

- ★ Entry forms should be marked for the appropriate grade level. You may use your 5 entries in any appropriate level.

- ★ Winners will be selected as follows: One "Best of Show" Literary and one winner for outstanding student in Elementary, Middle and High School.

- ★ All awards will be presented at the ArtBreak Awards Ceremony, Sunday, April 29th, beginning at 2:00 pm on the Chase Stage with the ArtBreak Idol finals.

- ★ VSAF entries will be displayed with their school's other entries.

- ★ Questions? Call Cassie Harwell 573-8739, or ArtBreak at 673-6500.



Juried Literary Arts Exhibition...NEW!

LITERARY ENTRY QUICK CHECK

- All Literary entries are due Tuesday, April 10th and Wednesday, April 11th from 3:30 pm -5:30 pm. NO LATE ENTRIES WILL BE ACCEPTED. Location to be determined.
 - Fill out entry forms properly and completely and attach to work. Print or type form, attach with a paperclip.
 - Bring two hard copies of the students work. Copy #1 is submitted with form and should have students name under title. Copy #2, without a form, **DOES NOT** have students name or school listed anywhere on copy. Copy #2 will be used for judging.
 - Any entries that do not meet all requirements will be disqualified. Final decisions are at the discretion of the jurors.
 - DO prepare an alphabetized list of entries, by grade level, to turn in with your work. Only one grade per list (see sample). **INCLUDE A DIGITAL COPY (word format) ON A FLASH DRIVE ALONG WITH GRADE LEVEL GROUP SUBMISSION SHEETS. (SEE SAMPLE)**. Digital copies for forms available upon request.
 - Digital copy of piece **MUST** have student's name under title.
 - Jurying is a closed event. Teachers and participants are not permitted.
 - Winners will be announced to schools on Wednesday, April 18th.
 - List VSAF entries on a separate page. List name, title, category, and level.
 - Questions? Call Cassie Harwell at 573-8739, or ArtBreak at 673-6500.
-

CATEGORIES FOR LITERARY WORK

POETRY INCLUDES:

- Free Verse:** Unrhymed poetry on any subject or theme.
 - Rhymed:** Any subject or theme.
 - Narrative:** Poetry that has a plot, tells a story.
 - Haiku:** Three lines using nature as a theme with some indication of season, using the traditional form of 5-7-5 syllables on each of the lines.
 - Humorous:** Free verse or rhymed poetry with an amusing theme or subtext.
-

PROSE INCLUDES:

- Short Story:** Fictional story containing a plot and character development.
 - Personal Narrative:** True account based on one's personal experiences.
 - Humorous:** Prose with an amusing theme or subtext.
 - Essay:** A multi-paragraph nonfiction composition on a single topic, usually expressing one's personal point of view.
 - Descriptive:** A prose composition using figurative language and sensory details.
-

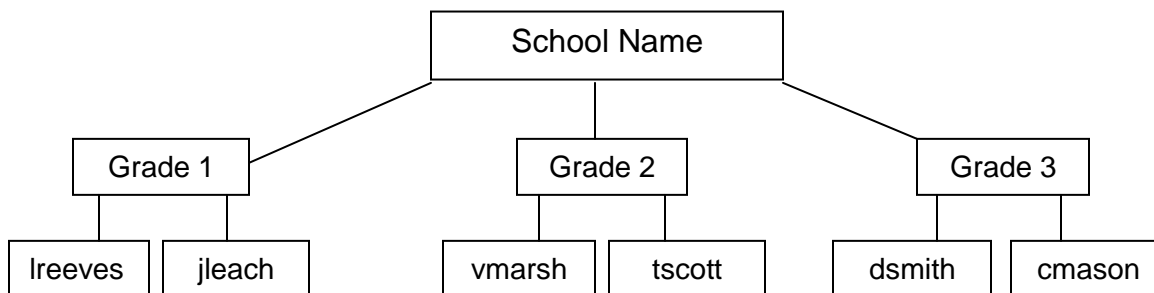
Juried Literary Exhibition... NEW!!! (Continued)

Literary List Samples: NEW!!!

Arthur Circle Elementary – Grade 3 Entries			
Name	Title	Category	Grade
Dunlap, Kirk	The Pelican	Haiku	3
Herrin, Jace	Floating Face	Short Story	3
Mitchell, Jake	Masai Woman	Free Verse	3
Porter, Briana	The Colors of Tanzania	Rhymed	3
Priess, Matt	The Grazing Zebra	Essay	3

Captain Shreve High School – VSAF			
Name	Title	Category	Grade
Carroll, John	The Legend	Short Story	9
Cassard, Neil	Lake of Tranquility	Haiku	10
Dowden, Sarah	My Vision	Essay	12
Hancock, Andy	Mission: The Girl	Narrative	10

Digital File Sample



ENTRY FORM ATTACHMENT

- Submit copy #1 **WITH** student's name to the back of the entry form and put copy #2 **WITHOUT** name on top of copy #1 facing outward. Make sure the entry form **FACES** you when you turn the **PIECE** face down. It's a good idea to make an **EXTRA** copy for your records.
 - Attach the entry form with a small paper clip to single or multi page entries and/or forms. Then use another paperclip to hold all copies of each piece together with the level list on top.
 - DON'T use any staples, glue, or tape to prepare your entries!**
 - Submit work for EACH grade level in a **SEPARATE** clasp envelope, labeled with school name and grade level. (One grade level per envelope).
-

Juried Literary Exhibition... NEW!!! (Continued)

**Please read all of the guidelines in this guide for exhibitions to avoid confusion or errors on entries!*

ENTRY FORM DO'S

- DO use the official full-page entry forms that are in your packet. DON'T cut the entry form down!
 - DO use the yellow forms for VSAF.
 - DO fill out the form completely. Please print or type!
 - DO sign and date the form and have the student and parent sign the form.
-

LITERARY DO'S

- DO submit original student work.
 - DO submit works created by one student, not groups of students.
 - DO submit literary entries that are TYPED and DOUBLE-SPACED, at least 12 pt. font in BLACK INK on 8-1/2" x 11" white paper with 1" margins.
 - DO submit up to two pieces per student.
 - DO submit ONE original **with** student's name under title attached to the entry form attached and ONE copy **without** entry form or students name attached.
 - NEW!!! Bring a digital copy to include each grade level and student's entries on a flash drive at the time of turn in. Digital copy MUST have students name under the title and must be in WORD format. File folder must be the school name. Then a file folder for each level. Within each level should be the student's digital copy saved by first initial and last name of student. Flash drive will be returned at the time of turn in.**
-

LITERARY DON'TS

- DON'T submit work that is published at the time of entry.
 - DON'T submit pieces that contain artwork or drawings of any kind.
 - DON'T submit pieces that are longer than 10 pages.
 - DON'T use any font smaller than 12 point. **You may go larger!**
 - DON'T use staples.
-



ArtBreak Juried Literary Arts Exhibition

LITERARY ENTRY FORM

VSAF

SCHOOL _____

Principal _____

Name _____ Age _____ Grade _____

Home Address _____ City _____

Zip _____ Home Phone _____ Email _____

Teacher (First & Last) _____

Phone _____ Email _____

Title of Work _____

- Grade Level:**
- | | |
|---|---|
| <input type="checkbox"/> Grade PreK/ECE | <input type="checkbox"/> Grade K (Kindergarten) |
| <input type="checkbox"/> Grade 1 | <input type="checkbox"/> Grade 2 |
| <input type="checkbox"/> Grade 3 | <input type="checkbox"/> Grade 4 |
| <input type="checkbox"/> Grade 5 | <input type="checkbox"/> Grade 6 |
| <input type="checkbox"/> Grade 7 | <input type="checkbox"/> Grade 8 |
| <input type="checkbox"/> Grade 9 | <input type="checkbox"/> Grade 10 |
| <input type="checkbox"/> Grade 11 | <input type="checkbox"/> Grade 12 |

Prizes will be awarded in the following categories:

Please check the appropriate literary category

POETRY: free verse rhymed poetry narrative haiku humorous

PROSE: short story personal narrative humorous essay descriptive

Statement of Originality: *I certify that this is an original work of art as outlined in the Entry Guidelines and that all work was completed by the student.*

Student's Signature Date

Parent's Signature Date

Teacher's Signature Date

Attach entry form to back of original work according to entry guidelines in the ArtBreak Participation Guide.



Middle and High School Literary Portfolio Competition

The Middle and High School Literary Portfolio Award is presented to an outstanding 8th Grade student and a high school junior or senior.

All portfolio entries must include:

1. The student's original work.
2. The student's written artist's statement. Please visit the following website for samples and instructions on how to correctly prepare an artist's statement: <http://www.mollygordon.com/resources/marketingresources/artstatemt/>.
3. The student's taped interview conducted by ArtBreak management.
4. The signature forms with the student's, parent and teacher's signatures.

Please see accompanying packet for details. All submitted portfolios will be displayed at ArtBreak.

PORTFOLIO QUICK CHECK

- Portfolio entries are due Tuesday, April 3rd from 3:30 pm – 5:30 pm at **artspace**. Interviews will be Wednesday, April 4th, at **artspace**.
 - Only work, **COMPLETED UNDER THE DIRECTION OF A CADDO OR BOSSIER PARISH PUBLIC OR PRIVATE SCHOOL INSTRUCTOR**, is eligible for the competition. Portfolios that do not contain the correct number of pieces will be disqualified.
 - Submit SIX pieces: 1 short story, 1 essay, 1 poem, 1 personal narrative, and 2 additional pieces (genre is optional). Only work completed over the last two years is eligible for the competition. Portfolios that do not contain the correct number of pieces will be disqualified.
 - Each piece must be presented according to the guidelines for the Juried Literary Competition.
 - Submit entries that are TYPED and DOUBLE-SPACED, at least 12 pt. font in BLACK INK on 8-1/2" x 11" white paper with 1" margins. CLEAR photocopies are acceptable. Each student's portfolio should be presented separately in a clearly labeled 2 pocket duo-tang folder.
 - Portfolio entries are NOT eligible for entry into the Juried Literary Competition.
 - Student interviews will be recorded on Wednesday, April 4, 2012. Times will be assigned when the teacher submits the portfolios. **FAILURE TO TAPE THE INTERVIEW, SUBMIT A WRITTEN ARTIST'S STATEMENT, PROVIDE A SIGNED AGREEMENT OR SUBMIT THE CORRECT NUMBER OF PIECES WILL RESULT IN DISQUALIFICATION FROM THE COMPETITION.**
-

Literary Portfolio Entry Form

(page 1 of 2)

Middle and High School Literary Portfolio Competition

SCHOOL _____

Principal _____

Name _____ Grade _____

Home Address _____ City _____

Zip _____ Home Phone _____ Email _____

Teacher submitting Portfolio (First & Last):

Teacher Email _____ Phone _____

Please list the following for each piece:

TITLE	CATEGORY	TEACHER
1. _____		
2. _____		
3. _____		
4. _____		
5. _____		
6. _____		

Statement of Originality: *I certify that each piece in this portfolio is an original work of art wholly created and completed by the student as outlined in the 2012 Entry Guidelines.*

Student's Signature _____

Parent's Signature _____

Teacher's Signature _____

Date _____



STUDENT PORTFOLIO ENTRY AGREEMENT (Page 2 of 2)

Check the following boxes and sign below:

I am submitting:

- High:** Six pieces of writing **Middle:** Four pieces of writing
- Artist's Statement. Please visit the following website for samples and instructions on how to correctly prepare an artist's statement:
<http://www.mollygordon.com/resources/marketingresources/artstatement/>.
- I will be available to videotape an interview on Wednesday, April 4th between 3:30 pm – 5:30 pm at **artspace** (710 Texas Street, Shreveport).
- I understand that the time will be assigned by ArtBreak and communicated to my teacher on April 3rd when my work is submitted.

By signing this agreement, I certify that each piece in my Portfolio is an original work of art that I completed as a school-based assignment. Failure to adhere to any of the above stipulations or failure to turn in all required components will result in the disqualification of my Portfolio.

Student Name (Please Print)

_____ Student's Signature	_____ Date	_____ Parent's Signature	_____ Date
-------------------------------------	----------------------	------------------------------------	----------------------

Student contact information:

After School Phone _____ Email _____

My signature verifies that the work in this Portfolio was completed by the student as a school-based assignment.

_____ Teacher's Signature	_____ Date	_____ Teacher's Name (Please Print)
-------------------------------------	----------------------	---

Teacher's contact information: Email _____

STUDENT WORKSHOPS:

STUDENT CHOICE LITERARY

STUDENT CHOICE VISUAL ARTS

ORAL INTERPRETATION

The Student Workshops provide students from grades 5 – 12 the opportunity to enhance creative skills or learn new skills. These workshops are conducted by professionals in their respective fields. Teachers are encouraged to attend! The workshops provide valuable information and unique experiences, which can be used in the classroom.

Student Choice Literary and Visual Workshops

The Student Choice Award Workshops for Visual and Literary Arts provides students from grades 5-12 the opportunity to critique and select 25 Visual and 25 Literary Student Choice Awards. The workshops are designed for students to learn to make critical choices when viewing visual art or reading literary works. In addition to selecting and defending their choices, the students also learn a new technique in either literary or visual arts.

Oral Interpretation Workshop

In the Oral Interpretation Workshop, students will learn to orally present prose and poetry (Grades 5-12).

STAYED TUNED FOR OTHER EXCITING WORKSHOPS COMING!!!

STUDENT WORKSHOPS QUICK CHECK

- Fill out all of the requested information on the forms and submit them by April 11th.
 - ONLY** students who turn in a form by April 11th will be permitted to attend.
Forms **may not** be turned in the day of the workshop.
 - Workshops will take place on Wednesday, April 25th, at Shreveport Convention Center.
 - You may send students from grades 5 – 12, unless otherwise noted. **DON'T SEND STUDENTS YOUNGER THAN 5TH GRADE!**
 - You may send 1 or 2 students to EACH workshop.
 - You **MUST** obtain written permission from the student's parents.
 - Students must provide their own transportation and lunch. Students will be at the Convention Center the entire day. **THERE IS NO PLACE TO PURCHASE FOOD.** ArtBreak provides drinks.
 - All students should be dropped off at the Convention Center between 8:15 am - 8:30 am. Students should be picked up between 2:00 pm and 2:30 pm.
 - Questions? Call ArtBreak at 673-6500.**
-



STUDENT CHOICE VISUAL AWARDS WORKSHOP REGISTRATION FORM

SCHOOL _____	School Phone _____
STUDENT NAME _____	Home Phone _____
Address _____	City _____ State ____ Zip _____
GRADE _____ (NO STUDENT YOUNGER THAN 5 TH GRADE!)	

Dear Parent/Guardian,

The Student Choice Awards Workshop for Visual Arts will provide your student with an opportunity to critique and assist with the selection of the twenty-five entries to be judged for the Student Choice Awards. Designed to help students learn to make critical choices when viewing visual art, the workshop will be conducted by the ArtBreak Visual Arts Committee who will explain the criteria for selecting outstanding pieces.

You are asked to provide your student with **transportation to/from the workshop and a sack lunch**. Cold drinks will be provided; food items will not be sold. Students will be at the Convention Center the entire time and **there is no place to purchase food**.

The workshop will be conducted on **Wednesday, April 25th**. Please drop your student off at the Convention Center. Students will sign in for the workshop between 8:15 and 8:30 am in the North Lobby. The workshop will begin promptly at 8:30 am and will end at 2:00 pm.

Your student has been selected by his/her school's principal and visual arts instructor to attend this exciting and informative workshop. Please be sure your student understands that he/she will be expected to attend the entire workshop. **The school will be notified if a student does not attend or leaves before the workshop's end.**

_____ has my permission to attend the ArtBreak Student Choice Awards Workshop for Visual Arts at the Convention Center, **Wednesday, April 25th from 8:30 am to 2:00 pm**. I will be responsible for his/her transportation and a sack lunch.

PARENT/GUARDIAN SIGNATURE

PRINCIPAL'S AUTHORIZATION

- ★ Provide transportation to and from workshop
- ★ Provide a sack lunch

Turn in COMPLETED FORM BY April 11th.
WE MUST RECEIVE A COMPLETED REGISTRATION FORM FOR
EVERY PARTICIPATING STUDENT!



STUDENT CHOICE LITERARY AWARDS WORKSHOP REGISTRATION FORM

SCHOOL _____	School Phone _____
STUDENT NAME _____	Home Phone _____
Address _____	City _____ State ____ Zip _____
GRADE _____ (NO STUDENT YOUNGER THAN 5 TH GRADE!)	

Dear Parent/ Guardian,

The Student Choice Awards Workshop for Literary Arts will provide your student with an opportunity to critique and assist with the selection of the twenty-five entries to be judged for the Student Choice Awards. Designed to help students learn to make critical choices when reading literary works, the workshop will be conducted by the ArtBreak Literary Arts Committee who will explain the criteria for selecting outstanding pieces.

You are asked to provide your student with **transportation to/from the workshop and a sack lunch**. Cold drinks will be provided; food items will not be sold. Students will be at the Convention Center the entire time and **there is no place to purchase food**.

The workshop will be conducted on **Wednesday, April 25th**. Please drop your student off at the Convention Center. Students will sign in for the workshop between 8:15 am and 8:30 am. The workshop will begin promptly at 8:30 am and will end at 2:00 pm.

Your student has been selected by his/her school's principal and language arts instructor to attend this exciting and informative workshop. Please be sure your student understands that he/she will be expected to attend the entire workshop. **The school will be notified if a student does not attend or leaves before the workshop's end.**

_____ has my permission to attend the ArtBreak Student Choice Awards Workshop for Literary Arts at the Convention Center, **Wednesday, April 25th from 8:30 am to 2:00 pm**. I will be responsible for his/her transportation and a sack lunch.

PARENT/GUARDIAN SIGNATURE

PRINCIPAL'S AUTHORIZATION

- ★ Provide transportation to and from workshop
- ★ Provide a sack lunch

Turn in COMPLETED FORM BY April 11th.
WE MUST RECEIVE A COMPLETED REGISTRATION FORM FOR EVERY PARTICIPATING STUDENT!



ORAL INTERPRETATION WORKSHOP REGISTRATION FORM

SCHOOL _____	School Phone _____
STUDENT NAME _____	Home Phone _____
Address _____	City _____ State ____ Zip _____
GRADE _____ (NO STUDENT YOUNGER THAN 5 TH GRADE!)	

Dear Parent/ Guardian,

The Oral Interpretation Workshop will provide your student with an opportunity to learn Interpretive Reading skills and performance ability, taught by professionals in storytelling and theatre. Students who attend will have the opportunity to perform an Interpretive Reading of a student literary piece during the ArtBreak Festival Weekend.

You are asked to provide your student with **transportation to/from the workshop and a sack lunch**. Cold drinks will be provided; food items will not be sold. Students will be at the Convention Center the entire time and **there is no place to purchase food**.

The workshop will be conducted on **Wednesday, April 25th**. Please drop your student off at the Convention Center. Students will sign in for the workshop between 8:15 am and 8:30 am. The workshop will begin promptly at 8:30 am and will end at 2:00 pm.

Your student has been selected by his/her school's principal and language arts instructor to attend this exciting and informative workshop. Please be sure your student understands that he/she will be expected to attend the entire workshop. **The school will be notified if a student does not attend or leaves before the workshop's end.**

_____ has my permission to attend the ArtBreak Oral Interpretation Workshop at the Shreveport Convention Center, **Wednesday, April 25th, from 8:30 am to 2:00 pm**. I will be responsible for his/her transportation and a sack lunch.

PARENT/GUARDIAN SIGNATURE

PRINCIPAL'S AUTHORIZATION

- ★ Provide transportation to and from workshop
- ★ Provide a sack lunch

**Turn in COMPLETED FORM BY April 11th.
WE MUST RECEIVE A COMPLETED REGISTRATION FORM FOR
EVERY PARTICIPATING STUDENT!**

INDIVIDUAL COMPETITIONS

TALENT SHOW & ArtBREAK IDOL



ArtBreak Talent Show

Friday, April 27, 2012 – 7:00 pm

ArtBreak’s 17th annual Caddo-Bossier Talent Show will take place on Friday, April 27th! Contestants from ECE – 12th grades compete in various categories and are awarded more than \$1,000 in cash and prizes.

\$500	Best of Show
\$200	Elementary
\$200	Middle
\$200	High
\$200	People’s Choice – applause

\$1300

We will feature fine arts performances by students, including, but not limited to: singers, musicians, dancers, dramatic performances, comedy skits, and monologues.

TALENT SHOW

QUICK CHECK

- The student **MUST** bring the Talent Show Audition Request Form to the auditions on **Tuesday, March 20th**.
 - Plan now to audition at **artspace**, 710 Texas Street, Downtown Shreveport on **Tuesday, March 20th, 4:00 pm – 8:00 pm**. Auditions will be on a first come basis.
 - Reserve Friday, April 27th on your calendar now! The Talent Show will start at 7:00 pm.**
 - Questions? Call ArtBreak at 673-6500.**
-

TALENT SHOW RULES

- ★ Groups and individuals are eligible. **Students MUST be enrolled in grades ECE – 12 in any Caddo Parish or Bossier Parish School or participating private or home school association. Individuals and groups may only audition once. MAXIMUM GROUP SIZE IS 8.** If you audition with a group, you cannot also audition individually.
 - ★ CDs used as accompaniment **MUST BE INSTRUMENTAL ONLY, NO LYRICS!** The **exact CD** to be used at the competition must be used at the dress rehearsal. **There are no substitutions! CDs will NOT be returned after ArtBreak.**
 - ★ **The song/number/act performed at auditions must be the same** as the one performed at the Talent Show. **This is a STRICT rule.**
 - ★ **Mandatory** dress rehearsal is **Thursday, April 26th, 5:00 pm - 7:00 pm** at the Shreveport Convention Center. **ALL** contestants must attend the auditions **and** dress rehearsal. Failure to attend the dress rehearsal results in dismissal from the Talent Show.
 - ★ **The Talent Show is Friday, April 27th and begins at 7:00 pm. All contestants will arrive 45 minutes before the beginning of the show; no later than 6:15 pm for seating and instruction.**
 - ★ **All acts, including language, costuming and theme, must be appropriate for family audiences. (ArtBreak is rated “K” for Kids!)**
 - ★ **Please no tumbling, twirling, stand-up comedy, lip sync, dance lines, or drill teams!**
 - ★ Students can also audition for the ArtBreak Idol competition as a solo vocalist.
-



Talent Show Audition Form

ELIGIBILITY: All Caddo and Bossier Parish students who enter will be auditioned. Approximately 18 acts will be chosen for the Show.

ArtBreak is proud to present the 17th annual CADDO-BOSSIER TALENT SHOW on **Friday, April 27th, at 7:00 pm** at the Shreveport Convention Center! Auditions will be Tuesday, March 20th from 4:00 pm – 8:00 pm at **artspace**, 710 Texas Street, Downtown Shreveport. There is no set audition time. Contestants sign in and wait to be called for their turn. Please bring the filled in form to the auditions.

TALENT SHOW RULES

- Groups and individuals are eligible. **Students MUST be enrolled in grades ECE – 12 in any Caddo or Bossier Parish School. Individuals and groups may only audition once.** If you audition with a group, you cannot audition individually. **Maximum group size is 8 students.**
- Audio recordings* used as accompaniment for singing acts **MUST BE INSTRUMENTAL ONLY!** The **exact recording** to be used at the competition must be used at the dress rehearsal. **There are no substitutions! *Do not bring original CDs because music will not be returned after the Talent Show.**
- The song/number/act performed at auditions must be the same** as the one performed at the Talent Show.
- Mandatory** dress rehearsal is **Thursday, April 26th, 5:00 pm - 7:00 pm at the Shreveport Convention Center.** **ALL** contestants must attend **both** the audition **and** dress rehearsal.
- All acts, including language, costuming and theme must be appropriate for family audiences. (ArtBreak is rated “K” for Kids!)**
- Please, **NO** tumbling, twirling, stand-up comedy, lip sync, dance lines or drill teams!

PLEASE REPRODUCE THIS FORM AS NEEDED! Bring to audition!!

Group Name: _____	Student’s School: _____
Student(s) Name (list everyone in group): _____	
Address: _____	City: _____ Zip: _____
Phone: _____	Email: _____
Parent Signature*: _____	Parent Name:(Print) _____ Date: _____
*My signature is an agreement to abide by all of the rules and guidelines of the contest and to allow my child's image to be reproduced for promotional purposes only.	

Grade Level (check one): Elementary _____ Middle _____ High _____

Type of Act: Vocal _____ Instrumental _____ Dance _____

Other (please specify) _____

Equipment Needs: # of Mics _____ CD player _____ Piano _____ Other _____

**** Please note: ArtBreak CANNOT SUPPLY “HEAD MICS.” Only 1 piano is available**



ArtBreak Idol Competition

Bossier Arts Council presents the 6th Annual ArtBreak Idol competition. Finals will take place on Sunday, April 29th, in conjunction with the Awards Ceremony! Contestants of all ages compete in a solo-vocalist competition for prizes at varying levels, up to \$1,000.

Students will go through five elimination rounds to earn the title of “**ArtBreak Idol.**”

ELIMINATION ROUNDS:

Auditions will be performed **acappella** on **Monday, April 16th**, from 4:00 pm – 8:00 pm at the Shreveport Convention Center (Caddo St. and Market) in front of three judges. Contestants must be approved by two of the three judges to go on to the first elimination round.

Elimination Round One will take place on **Thursday, April 19th** from 4:30 pm – 6:30 pm at the Shreveport Convention Center. Contestants will perform a song they have prepared (a maximum length of 3 minutes). The song can be performed with a musical track, but there should be limited background vocals on the audio recording. **Song choice must come from the following genre: Country, Pop, or Broadway.** Judges will share with the contestant their opinion upon completion of the performance. Up to 25 contestants will be selected to go to the next round of elimination.

Elimination Round Two will take place on **Monday, April 23rd** from 4:30 pm – 6:30 pm at the Shreveport Convention Center. Contestants will perform a song they have prepared (a maximum length of 3 minutes). The song can be performed with a musical track, but there should be limited background vocals on the audio recording. **Song choice must come from the following genre: Country.** Judges will share with the contestant their opinion upon completion of the performance.

Elimination Round Three will take place **Wednesday, April 25th** at the Shreveport Convention Center, from 4:30-6:30 pm. **Song choice must come from the following genre: Pop. They will be judged not only on singing, but also stage presence.** Following this Elimination Round, these contestants will learn an ensemble piece that will be performed at Elimination Round Four. The three judges will determine up to 15, but will not announce who they are until Round Four. A rehearsal will be held for the Ensemble piece on **Wednesday, April 25th**, 7:00 pm – 9:00 pm at the Shreveport Convention Center.

Elimination Round Four will take place **Saturday, April 28th** from 7:00 pm – 10:00 pm during the ArtBreak Festival. The contestants from Round Three will open the evening with the ensemble piece assigned during Round Three. Following this performance, up to 15 contestants will be announced and they will perform a song from the **Broadway genre.** At the end of the competition, the top 3 semi-finalists will be announced.

Final Round will take place on **Sunday, April 29th** from 2:00 pm – 2:30 pm prior to the ArtBreak Awards Ceremony. The top 3 contestants will perform 1 song each. The **ArtBreak Idol** will be determined and then announced at the close of the Awards Ceremony. A rehearsal will be held for finalists prior to their performance. Date and Time TBD.

ArtBreak Idol Awards:

First Place ArtBreak Idol receives \$500 cash and a recording session at Fairfield Studios.

Second Place finalist receives \$300 cash.

Third Place finalist receives \$150 cash.

Up to twelve (12) semi-finalists receive \$50 cash each.

The **ArtBreak Selected Winner** must perform up to three ArtBreak related engagements during the 2011-2012 school year as requested by the Bossier Arts Council or by the ArtBreak management team.

ARTBREAK IDOL

QUICK CHECK

- Plan now to audition at the Shreveport Convention Center, 400 Caddo Street, on April 16th, 4:00 pm - 8:00 pm. There are no set audition times. Participants will sign in and wait for their turn.
 - Students should complete the form and bring it with them to the audition.
 - Questions? Call Bossier Arts Council at 741-8310 or ArtBreak at 673-6500.**
-

ARTBREAK IDOL RULES

- ★ Individual students, **ONLY**, are eligible. **Students MUST be enrolled in grades ECE – 12 in any Caddo Parish or Bossier Parish school or participating private school.** Individual students may only audition once and will be stopped during the audition, as soon as the judges have made their determination for qualification. **Audition selections will be acappella** style (no musical accompaniment).
 - ★ If the student qualifies, audio recordings in the form of CDs may be used as accompaniment for each of the remaining four elimination rounds; however they **MUST BE PRIMARILY INSTRUMENTAL!** Minimal background vocals are allowed on the tape. Do not use original recordings because **CDs will not be returned after ArtBreak.**
 - ★ Different songs must be performed for each elimination round from the listed genres. The selection of four songs must be pre-approved by an ArtBreak Idol coordinator prior to the performance.
 - ★ **All acts, including song lyrics, language, costuming and theme, must be appropriate for family audiences (ArtBreak is rated “K” for Kids!)** The selection of four songs must be pre-approved by an ArtBreak Idol coordinator prior to the performance.
 - ★ Participants must be available for all elimination rounds, including rehearsals on **Wednesday, April 25th, 7:00 pm – 9:00 pm**, and **Saturday, April 28th, 9:00 pm – 11:00 pm** for the ensemble piece. Any participant who misses either an elimination round or a rehearsal will be disqualified immediately. Please see the full schedule for ArtBreak Idol contestants on the audition form.
 - ★ ArtBreak Idol contestants can also audition for the **ArtBreak Talent Show.** However, the two competitions are very different. Read the instructions for both carefully.
-



ArtBreak Idol Audition Form

AWARDS: Up to \$1,000 in cash and prizes!

ELIGIBILITY: All Caddo and Bossier Parish students are eligible to audition.

ARTBREAK IDOL RULES

- Only individual vocalists are eligible. **Students MUST be enrolled in grades ECE – 12 in any Caddo or Bossier Parish School.**
- AUDITIONS:** Individuals may only audition once. **Auditions are performed ACAPPELLA (no music) before three judges.** Judges may determine that they do not desire to hear the entire performance. Two judges must agree to move a contestant to the next round of elimination. The Judges will determine which contestants will be selected to move on to Round One, there is no limit. There is no set audition time. Contestants sign in and wait to be called for their turn.
Auditions will be Monday, April 16th, from 4:00 pm – 8:00 pm at the Shreveport Convention Center, 400 Caddo Street.
- Elimination Round One** will take place on **Thursday, April 19th** from 4:30 pm – 6:30 pm at the Shreveport Convention Center. Contestants will perform a song they have prepared (a maximum length of 3 minutes). The song can be performed with a musical track, but there should be limited background vocals on the audio recording. **Song choice must come from the following genre: Country, Pop, or Broadway.** Judges will share with the contestant their opinion upon completion of the performance. Up to 25 contestants will be selected to go to the next round of elimination.
- Elimination Round Two** will take place on **Monday, April 23rd** from 4:30 pm – 6:30 pm at the Shreveport Convention Center. Contestants will perform a song they have prepared (a maximum length of 3 minutes). The song can be performed with a musical track, but there should be limited background vocals on the audio recording. **Song choice must come from the following genre: Country.** Judges will share with the contestant their opinion upon completion of the performance.
- Elimination Round Three** will take place **Wednesday, April 25th** at the Shreveport Convention Center, from 4:30-6:30 pm. **Song choice must come from the following genre: Pop. They will be judged not only on singing, but also stage presence.** Following this Elimination Round, these contestants will learn an ensemble piece that will be performed at Elimination Round Four. The three judges will determine up to 15, but will not announce who they are until Round Four. A rehearsal will be held on **Wednesday, April 25th, 7:00 pm – 9:00 pm** at the Shreveport Convention Center.
- Elimination Round Four** will take place **Saturday, April 28th** from 7:00 pm – 10:00 pm during the ArtBreak Festival. The contestants from Round Three will open the evening with the ensemble piece assigned during Round Three. Following this performance, up to 15 contestants will be announced and they will perform a song from the **Broadway genre.** At the end of the competition, the top 3 semi-finalists will be announced.
- Final Round** will take place on **Sunday, April 29th** from 2:00 pm – 2:30 pm prior to the ArtBreak Awards Ceremony. The top 3 contestants will perform 1 song each. The **ArtBreak Idol** will be determined and then announced at the close of the Awards Ceremony. A rehearsal will be held for finalists prior to their performance. Date and Time TBD.
- Audio Tracks* used as accompaniment should be **PRIMARILY INSTRUMENTAL!** With **MINIMAL BACKGROUND SINGING.**
***Do not bring original CDs, because music will not be returned after competition.**
- All acts, including language, costuming and theme, must be appropriate for family audiences (ArtBreak is rated “K” for Kids!) Contestants may only sing, rapping is not allowed.**

PLEASE REPRODUCE THIS FORM AS NEEDED! Bring to audition!!

Student Name _____
Parent's Name _____
Address _____ City _____ Zip _____
Phone (day) _____ (evening) _____ Email _____

Student's School : _____ Grade: _____ Age: _____

Parent Signature*: _____ **Date:** _____

*My signature is an agreement to abide by all of the rules and guidelines of the contest and to allow my child's image to be reproduced for promotional purposes only.

For a digital copy
of the
ArtBreak Participation
Guide
and
to receive
Further Instruction
Please visit
www.shrevearts.org

ArtBreak is a project of the Shreveport Regional Arts Council
400 Clyde Fant Parkway, Shreveport, LA 71101
(318) 673-6500 (office) • (318) 673-6515 (fax)